

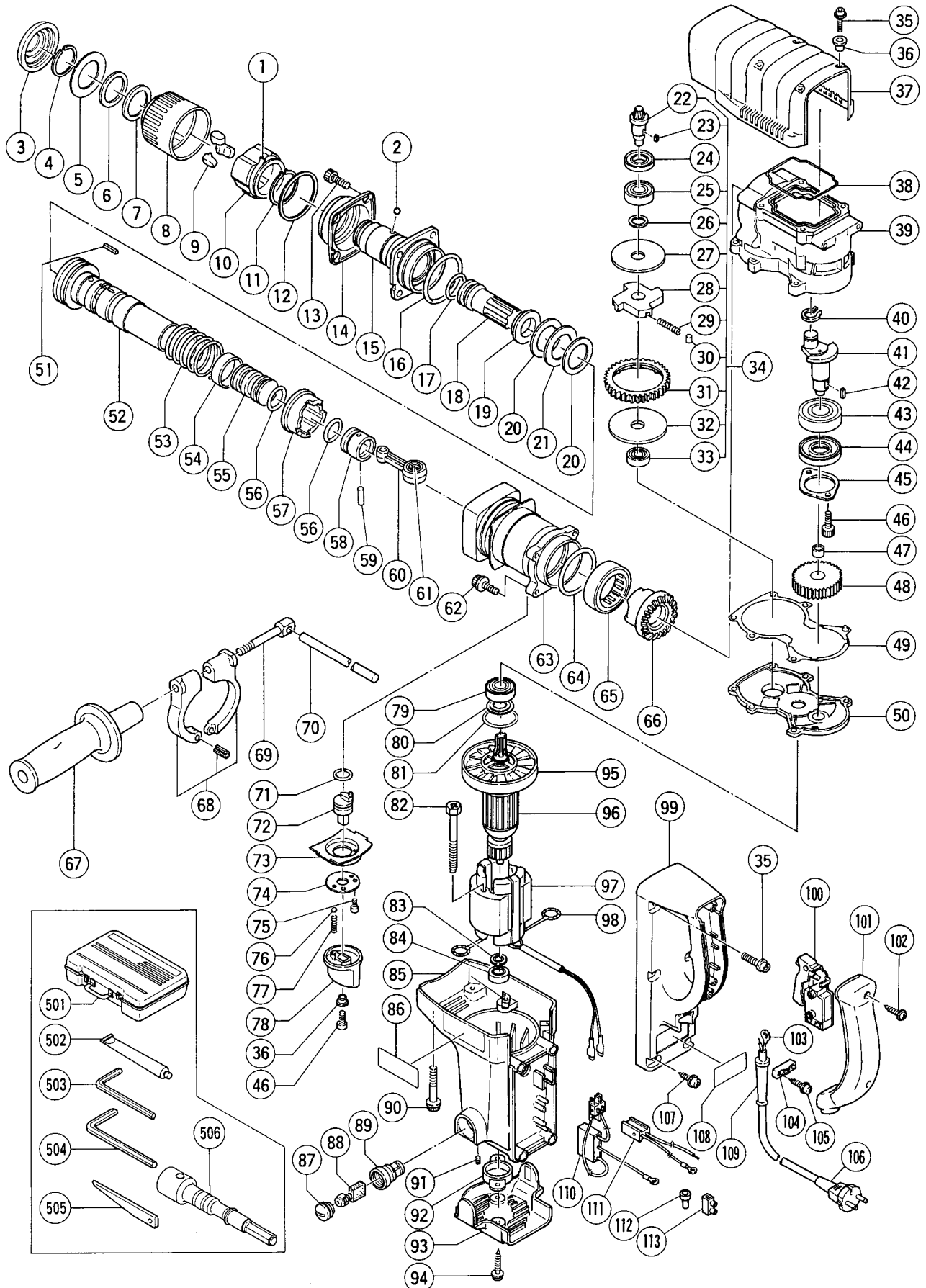
## ELECTRIC TOOL PARTS LIST

■ HAMMER DRILL

Model DH 40YB

1996 · 6 · 30

(E1)



## PARTS

DH 40YB

ITEM NO.	CODE NO.	DESCRIPTION	NO. USED	REMARKS
1	313-140	C - TYPE SPRING	1	
2	959-156	STEEL BALL D7.0 (10 PCS.)	1	
3	313-075	FRONT CAP	1	
4	313-074	RETAINING RING D32	1	
5	313-073	FRONT WASHER (A)	1	
6	313-072	DAMPER RING	1	
7	313-071	FRONT WASHER (B)	1	
8	313-070	GRIP	1	
9	313-069	SADDLE KEY	3	
10	313-068	SADDLE KEY HOLDER	1	
11	313-067	RETAINING RING FOR D38 SHAFT	1	
12	313-076	RUBBER RING	1	
13	993-040	NYLOCK HIGH TENSION BOLT M7X25	4	
14	313-066	FRONT SLEEVE	1	
15	313-065	FRONT COVER	1	
16	956-996	O - RING (1AS - 60)	1	
17	981-857	O - RING (C)	1	
18	313-063	SECOND HAMMER	1	
19	981-862	DAMPER WASHER	1	
20	992-799	DAMPER	2	
21	992-798	WASHER	1	
22	313-052	BEVEL PINION	1	
23	944-109	FEATHER KEY 3X3X8	1	
24	313-050	OIL SEAL (A)	1	
25	600-2DD	BALL BEARING 6002DDUCMPS2S	1	
26	313-058	WASHER	1	
27	313-053	WASHER (A)	1	
28	313-055	GEAR HOLDER	1	
29	313-056	SPRING (C)	4	
30	313-057	NEEDLE PIN D6X6	4	
31	313-054	SECOND GEAR	1	
32	313-059	SPACER	1	
33	629-VVM	BALL BEARING 629VVMC2EPS2L	1	
34	313-051	SLIP CLUTCH ASS'Y	1	INCLUD.22,23,25 - 33
35	313-082	NYLOCK BOLT (W/FLANGE) M5X16	6	
36	991-711	DISTANCE PIECE (B)	5	
37	313-083	CRANK CASE COVER ASS'Y	1	INCLUD.36
38	313-084	RUBBER SEAL	1	
39	313-045	CRANK CASE	1	
40	939-542	RETAINING RING FOR D12 SHAFT (10 PCS.)	1	
41	313-046	CRANK SHAFT	1	
42	940-533	FEATHER KEY 3X3X10	1	
43	620-4VV	BALL BEARING 6204VVCMP2S	1	
44	313-049	OIL SEAL (B)	1	
45	313-048	BEARING COVER	1	
46	878-181	NYLOCK HEX. SOCKET HD. BOLT M5X16	3	
47	939-299	NEEDLE BEARING (M661)	1	
48	313-047	FIRST GEAR	1	
49	313-139	SEAL PACKING	1	
50	313-088	GEAR COVER	1	
51	971-750	FEATHER KEY 3X3X20	2	

\*: ALTERNATIVE PARTS

## PARTS

DH 40YB

ITEM NO.	CODE NO.	DESCRIPTION	NO. USED	REMARKS
52	313-114	CYLINDER	1	
53	313-121	CLUTCH SPRING	1	
54	981-858	VALVE BAND	1	
55	313-062	STRIKER	1	
56	986-104	O - RING	2	
57	981-956	CLUTCH	1	
58	981-885	PISTON	1	
59	980-708	PISTON PIN	1	
60	980-707	CONNECTING ROD ASS'Y	1	INCLUD.61
61	980-756	NEEDLE BEARING (NSK AJ50 1203)	1	
62	993-041	NYLOCK BOLT (W/FLANGE) M6X25	4	
63	313-116	CYLINDER CASE	1	
64	956-996	O - RING (1AS - 60)	1	
65	993-069	NEEDLE BEARING (B) (NTN HMK4520)	1	
66	313-115	BEVEL GEAR	1	
67	313-078	SIDE HANDLE	1	
68	313-079	HANDLE HOLDER	1	
69	313-080	HANDLE BOLT	1	
70	971-786	STOPPER ROD	1	
71	873-095	O - RING (P - 16)	1	
72	313-118	LEVER SHAFT	1	
73	313-120	UNDER COVER	1	
74	313-119	SHAFT COVER	1	
75	880-630	NYLOCK HEX. SOCKET HD. BOLT M4X12	2	
76	959-155	STEEL BALL D3.97 (10 PCS.)	1	
77	981-966	SPRING (B)	1	
78	313-117	LEVER	1	
79	620-2VV	BALL BEARING 6202VVCMP2S	1	
80	980-700	DUST WASHER (B)	1	
81	313-089	O - RING	1	
82	953-174	HEX. HD. TAPPING SCREW D5X55	2	
83	313-086	DUST WASHER (A)	1	
84	629-VVM	BALL BEARING 629VVMC2EPS2L	1	
85	313-141	HOUSING	1	INCLUD.89,91
86		HITACHI LABEL	1	
87	945-161	BRUSH CAP	2	
88	981-812Z	CARBON BRUSH (AUTO STOP TYPE) (1 PAIR)	2	
89	958-900	BRUSH HOLDER	2	
90	313-077	NYLOCK BOLT (W/FLANGE) M5X25	6	
91	938-477	HEX. SOCKET SET SCREW M5X8	2	
92	313-091	BEARING HOLDER	1	
93	313-090	TAIL COVER	1	
94	302-089	TAPPING SCREW (W/FLANGE) D5X20 (BLACK)	2	
95	971-097	FAN	1	
* 96	360-410C	ARMATURE ASS'Y 110V - 115V	1	INCLUD.95
* 96	360-410E	ARMATURE ASS'Y 220V - 230V	1	INCLUD.95
* 96	360-410F	ARMATURE ASS'Y 240V	1	INCLUD.95
* 97	340-361C	STATOR ASS'Y 110V - 115V	1	INCLUD.98
* 97	340-361E	STATOR ASS'Y 220V - 230V	1	INCLUD.98
* 97	340-361F	STATOR ASS'Y 240V	1	INCLUD.98

\*: ALTERNATIVE PARTS

**PARTS**

**DH 40YB**

ITEM NO.	CODE NO.	DESCRIPTION	NO. USED	REMARKS
* 97	340-361G	STATOR ASS'Y 220V - 230V	1	INCLUD.98 FOR NZL,GBR (230V),SAF,ITA, FRG,FRA,BEL,HOL,DEN,FIN,SWE,AUT,NOR,ESP, SUI
98	930-703	BRUSH TERMINAL	2	
99	313-095	HANDLE	1	
100	313-093	SWITCH (C) (2P SCREW TYPE W/O LOCK)	1	
101	313-096	HANDLE COVER	1	
102	301-653	TAPPING SCREW (W/FLANGE) D4X20 (BLACK)	2	
* 103	992-810	TERMINAL	1	
* 103	980-063	TERMINAL	1	FOR KUW,SIN,SAF,NZL,GBR
* 104	960-266	CORD CLIP	1	
* 104	981-987Z	CORD CLIP	1	FOR SUI
105	984-750	TAPPING SCREW (W/FLANGE) D4X16	2	
* 106	500-239Z	CORD	1	(CORD ARMOR D10.7)
* 106	500-390Z	CORD	1	(CORD ARMOR D10.7) FOR ITA,FRG,FRA,BEL, HOL,DEN,FIN,SWE,AUT,NOR,ESP
* 106	500-227Z	CORD	1	(CORD ARMOR D8.2) FOR NZL
* 106	500-232Z	CORD	1	(CORD ARMOR D8.2) FOR SAF
* 106	500-235Z	CORD	1	(CORD ARMOR D8.2) FOR INA
* 106	500-391Z	CORD	1	(CORD ARMOR D10.7) FOR SUI
* 106	500-394Z	CORD	1	(CORD ARMOR D10.7) FOR SYR
* 106	500-422Z	CORD	1	(CORD ARMOR D8.2) FOR KUW,SIN
* 106	500-439Z	CORD	1	(CORD ARMOR D10.7) FOR AUS
* 106	500-446Z	CORD	1	(CORD ARMOR D10.7) FOR GBR
107	305-558	TAPPING SCREW (W/FLANGE) D5X25 (BLACK)	4	
108		NAME PLATE	1	
* 109	958-049	CORD ARMOR D8.2	1	
* 109	940-778	CORD ARMOR D10.7	1	
* 110	313-142	PLUG (A)	1	W/NOISE SUPPRESSOR
* 110	313-092	PLUG (A)	1	W/O NOISE SUPPRESSOR
* 110	313-144	PLUG (C)	1	W/NOISE SUPPRESSOR FOR SUI
* 111	313-094	PLUG (B)	1	
* 111	313-143	PLUG (B)	1	FOR NZL,GBR,ITA,FRG,FRA,BEL,HOL,DEN,FIN, SWE,AUT,NOR,ESP,SUI,SAF
112	959-141	CONNECTOR 50092 (10 PCS.)	1	
* 113	938-307	PILLAR TERMINAL	1	FOR NZL,GBR,ITA,FRG,FRA,BEL,HOL,DEN,FIN, SWE,AUT,NOR,ESP,SUI,SAF

**STANDARD ACCESSORIES**

ITEM NO.	CODE NO.	DESCRIPTION	NO. USED	REMARKS
501	313-097	CASE (PLASTIC)	1	
502	981-840	GREASE (A) FOR HAMMER.HAMMER DRILL (30G)	1	
503	944-458	HEX. BAR WRENCH 4MM	1	
504	944-459	HEX. BAR WRENCH 5MM	1	
* 505	944-477	COTTER	1	FOR AUS
* 506	992-813	K - TAPER SHANK ADAPTER	1	FOR AUS

\* : ALTERNATIVE PARTS