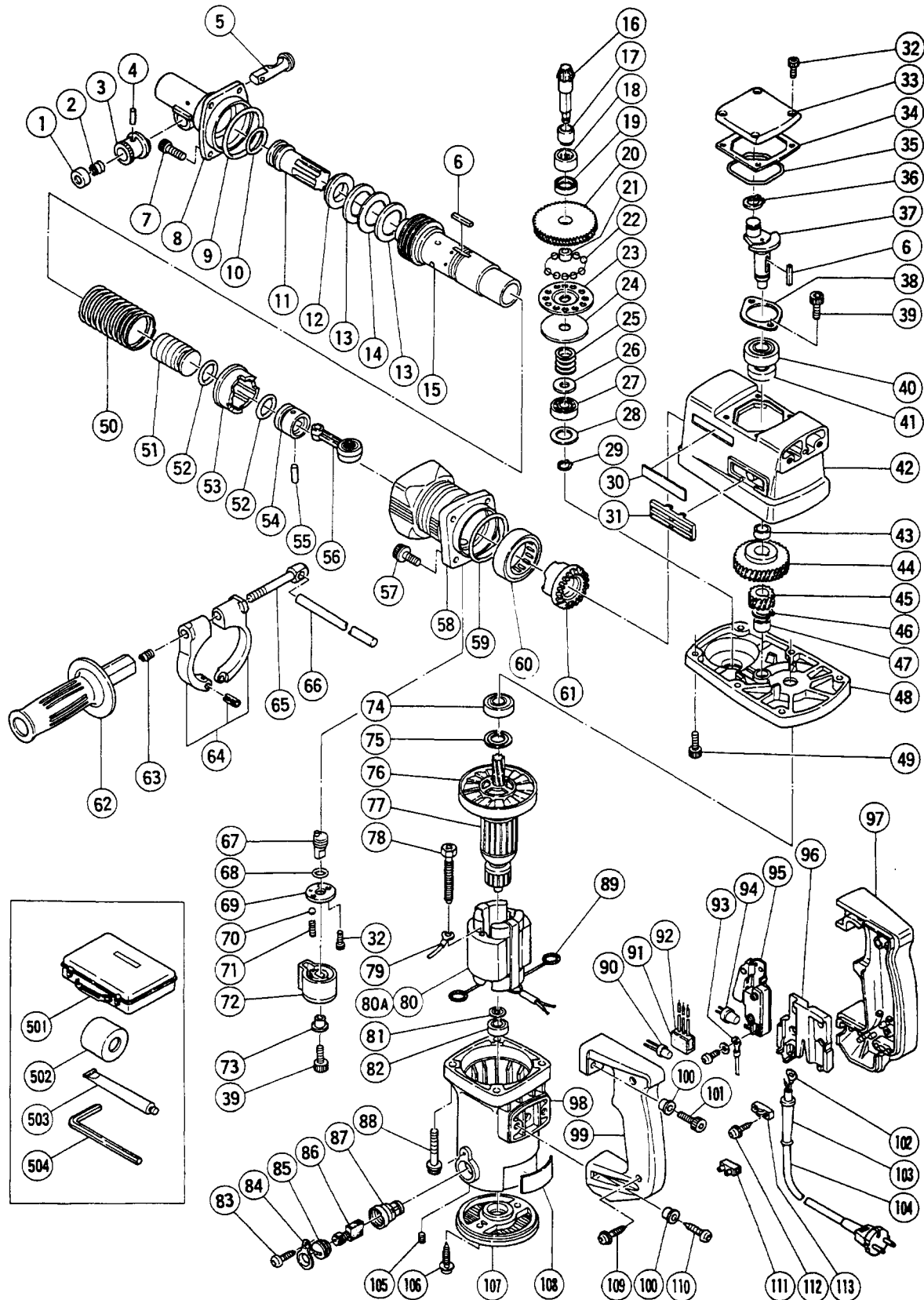


## ELECTRIC TOOL PARTS LIST

■ HAMMER DRILL  
Model DH 38YF

1993 · 10 · 1  
(E3)



## PARTS

DH 38YF

ITEM NO.	CODE NO.	DESCRIPTION	NO. USED	REMARKS
1	983-242	STOP WASHER	1	
2	981-937	STOPPER SPRING	1	
3	983-241	KNOB (A)	1	
4	943-364	NEEDLE ROLLER D4X20	1	
5	303-846	STOP LEVER	1	
6	971-750	FEATHER KEY 3X3X20	3	
7	991-698	SEAL LOCK BOLT M7X25	4	
8	303-340	FRONT COVER	1	
9	985-780	O - RING (E)	1	
10	986-882	O - RING	1	
11	303-339	SECOND HAMMER	1	
12	993-235	DAMPER WASHER	1	
13	993-234	DAMPER	2	
14	993-233	WASHER	1	
15	303-628	CYLINDER	1	
16	992-798	THIRD PINION	1	
17	981-850	SLEEVE	1	
18	981-852	NEEDLE BEARING (A) HK2012	1	
19	981-851	OIL SEAL (B)	1	
20	992-795	SECOND GEAR	1	
21	992-806	METAL	1	
22	959-150	STEEL BALL D6.35 (10 PCS.)	12	
23	992-782	HOLDER	1	
24	992-783	PLATE	1	
25	992-794	SPRING	1	
26	992-791	WASHER	1	
27	629-VVM	BALL BEARING 629VVMC2EPS2L	1	
28	844-525	BEARING WASHER (C)	1	
29	992-805	RETAINING RING FOR D9 SHAFT	1	
30	957-561	HITACHI LABEL	1	
31	991-713	WIND GUIDE (B)	2	
32	983-162	SEAL LOCK HEX. SOCKET HD. BOLT M4X12	6	
33	991-716	CRANK COVER	1	
34	980-749	SEAL PACKING	1	
35	980-744	O - RING (S - 55)	1	
36	939-542	RETAINING RING FOR D12 SHAFT (10 PCS.)	1	
37	300-006	CRANK SHAFT	1	
38	981-847	BEARING COVER	1	
39	984-509	SEAL LOCK HEX. SOCKET HD. BOLT M5X14	3	
40	620-3DD	BALL BEARING 6203DDUCMAV2S	1	
41	971-745	OIL SEAL (A)	1	
42	991-768	CRANK CASE ASS'Y	1	INCLUD.18,19,31
43	980-706	COLLAR	1	
44	300-007	FIRST GEAR	1	
45	300-008	SECOND PINION	1	
46	967-261	RETAINING RING FOR D17 SHAFT	1	
47	939-299	NEEDLE BEARING (M881)	1	
48	981-953	GEAR COVER	1	
49	992-803	SEAL LOCK HEX. SOCKET HD. BOLT M6X20	2	
50	981-957	SPRING (A)	1	
51	300-039	STRIKER	1	

\*: ALTERNATIVE PARTS

## PARTS

DH 38YF

ITEM NO.	CODE NO.	DESCRIPTION	NO. USED	REMARKS	
52	986-104	O - RING	2		
53	981-956	CLUTCH	1		
54	981-885	PISTON	1		
55	980-708	PISTON PIN	1		
56	980-707	CONNECTING ROD	1		
57	991-712	HEX. SOCKET HD. BOLT (W/FLANGE) M8X25	4		
58	300-011	CYLINDER CASE	1		
59	956-996	O - RING (1AS - 60)	1		
60	993-069	NEEDLE BEARING (B) (NTN HMK4520)	1		
61	981-954	THIRD GEAR	1		
62	981-870	SIDE HANDLE	1		
63	672-612	SPRING	1		
64	981-960	HANDLE HOLDER	1		
65	971-785	HANDLE BOLT	1		
66	971-786	STOPPER ROD	1		
67	981-964	LEVER SHAFT	1		
68	981-967	O - RING (A)	1		
69	981-965	SHAFT COVER	1		
70	959-155	STEEL BALL D3.97 (10 PCS.)	1		
71	981-966	SPRING (B)	1		
72	981-963	LEVER	1		
73	991-711	DISTANCE PIECE (B)	1		
74	620-2VV	BALL BEARING 6202VVCMP2S	1		
75	980-700	DUST WASHER (B)	1		
76	980-740	FAN	1		
*	77	360-122C	ARMATURE ASS'Y 110V	1	INCLUD.76
*	77	360-122E	ARMATURE ASS'Y 220V - 230V	1	INCLUD.76
*	77	360-122F	ARMATURE ASS'Y 240V	1	INCLUD.76
78	960-251	HEX. HD. TAPPING SCREW D5X65	2		
79	986-277	INTERNAL WIRE	1		
*	80	981-970J	STATOR ASS'Y 110V	1	INCLUD.89
*	80	981-970K	STATOR ASS'Y 220V - 230V	1	INCLUD.89
*	80	981-970F	STATOR ASS'Y 240V	1	INCLUD.89
*	80A	340-220F	STATOR ASS'Y 230V - 240V	1	INCLUD.89 FOR FRG,FRA,NOR,HOL
81	980-698	DUST WASHER (A)	1		
82	608-VVM	BALL BEARING 608VVMC2EPS2L	1		
83	958-715	TAPPING SCREW D4X10	2		
84	981-959	CAP COVER	2		
85	961-781	BRUSH CAP	2		
86	981-612Z	CARBON BRUSH (AUTO STOP TYPE) (1 PAIR)	2		
87	981-586	BRUSH HOLDER	2		
88	982-411	HEX. SOCKET HD. BOLT (W/FLANGE) M6X50	4		
89	930-703	BRUSH TERMINAL	2		
90	959-140	CONNECTOR 50091 (10 PCS.)	1		
91	963-243	SUPPORT	1		
92	994-273	NOISE SUPPRESSOR	1		
93	981-974Z	INTERNAL WIRE	1		
94	959-141	CONNECTOR 50092 (10 PCS.)	2		
95	990-941	SWITCH (B) (1P SCREW TYPE) W/O LOCK	1		
96	990-082	SUPPORT (E)	1		
97	992-808	HANDLE (A)	1		

\*: ALTERNATIVE PARTS



**STANDARD ACCESSORIES**

DH 38YF

ITEM NO.	CODE NO.	DESCRIPTION	NO. USED	REMARKS
*	501 303 - 506	CASE (STEEL)	1	
*	501 303 - 507	CASE (STEEL)	1	FOR NOR
	502 993 - 245	DUST COVER	1	
	503 981 - 840	GREASE (A) FOR HAMMER.HAMMER DRILL (30G)	1	
	504 944 - 459	HEX. BAR WRENCH 5MM	1	

**OPTIONAL ACCESSORIES**

ITEM NO.	CODE NO.	DESCRIPTION	NO. USED	REMARKS
601	985 - 374	DRILL BIT D13X400L (D1/2"X16")	1	
602	985 - 375	DRILL BIT D25X400L (D1"X16")	1	
603	985 - 376	DRILL BIT D38X400L (D1 - 1/2"X16")	1	
604	985 - 377	A - TAPER SHANK ADAPTER	1	
605	985 - 378	B - TAPER SHANK ADAPTER	1	
606	985 - 383	BULL POINT 300MM (12")	1	
607	985 - 381	COLD CHISEL W25X300L (1"X12")	1	
608	985 - 382	COLD CHISEL W25X460L (1"X18")	1	
609	985 - 384	CUTTER W38X300L (1 - 1/2"X12")	1	
610	985 - 385	CUTTER W50X300L (2"X12")	1	
611	985 - 386	SCOOP 105X405L (4 - 1/2"X18")	1	
612	984 - 029	CORE BIT SHANK D35 (1 - 3/8") OR BELOW	1	
613	985 - 379	CORE BIT SHANK D38 (1 - 1/2") OR ABOVE	1	
614	985 - 380	CORE BIT 50MM (2")	1	INCLUD.815
615	985 - 388	GUIDE PLATE (FOR CORE BIT 50MM)	1	
616	955 - 159	CORE BIT 105MM (4 - 1/8")	1	INCLUD.817
617	955 - 169	GUIDE PLATE (FOR CORE BIT 105MM)	1	
618	955 - 165	CENTER PIN (A) 133L FOR CORE BIT D38 - 150	1	
619	944 - 575	SYRINGE	1	
620	944 - 477	COTTER	1	
621	980 - 927	GREASE FOR HAMMER.HAMMER DRILL (500G)	1	
622	305 - 822	SERVICE KIT (DH 38YD ETC.)	1	INCLUD.7,9,10,13,34 - 36,52,59,86,503

\*: ALTERNATIVE PARTS