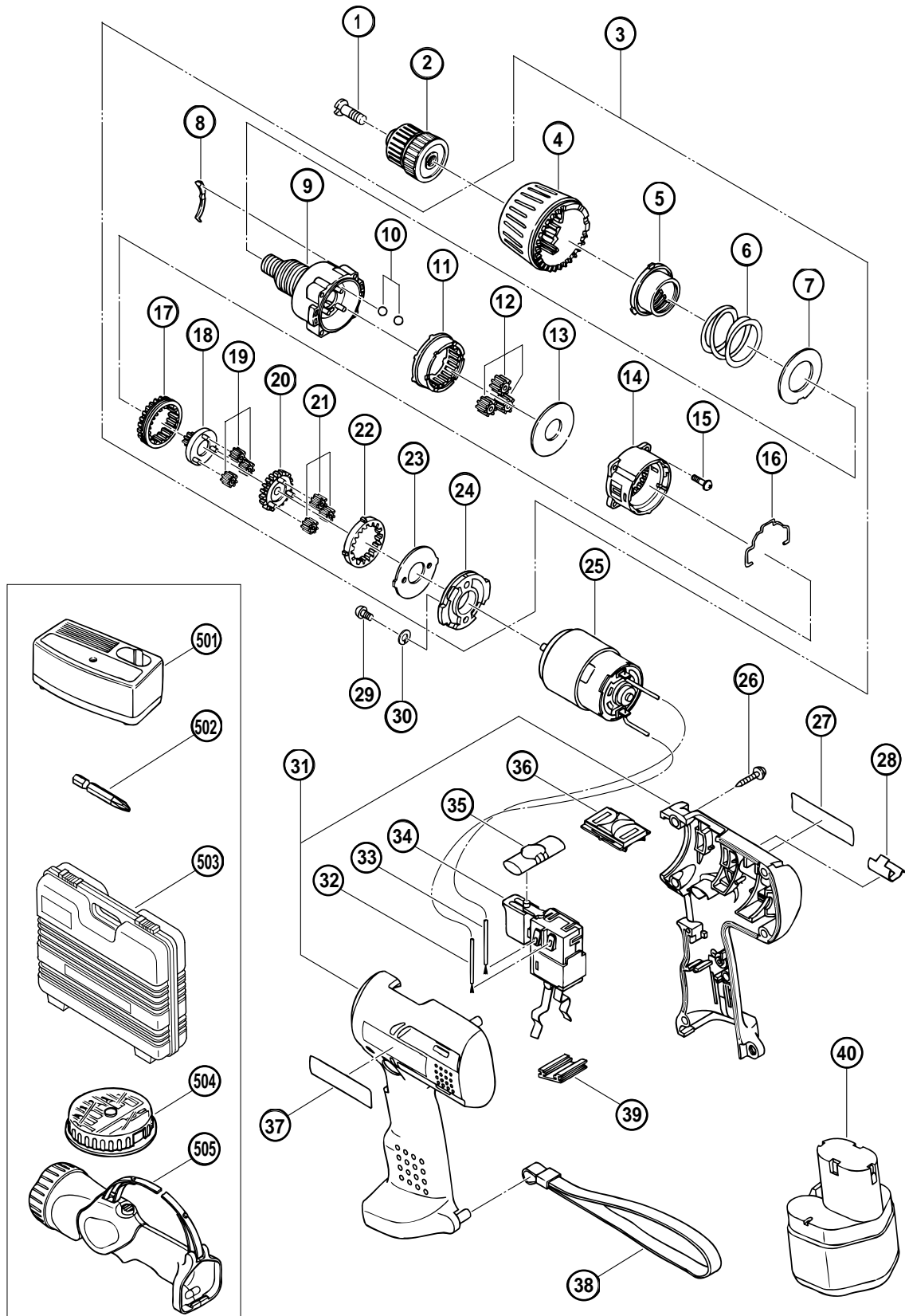


ELECTRIC TOOL PARTS LIST

■ CORDLESS DRIVER DRILL
Model FDS 9DVA

2001•3•30
(E2)



PARTS

FDS 9DVA

ITEM NO.	CODE NO.	DESCRIPTION	NO. USED	REMARKS
1	318-228	SPECIAL SCREW (LEFT HAND) M5X35	1	
2	312-516	DRILL CHUCK 10TLRD-N (W/O CHUCK WRENCH)	1	
3	318-229	GEAR BOX ASS'Y	1	INCLUD.4-24
4	318-233	CAP	1	
5	318-232	NUT	1	
6	312-709	SPRING	1	
7	312-714	WASHER (D)	1	
8	312-713	CLICK SPRING	1	
9	318-230	FRONT CASE	1	
10	306-936	STEEL BALL D5	12	
11	312-715	RING GEAR	1	
12	312-705	PLANET GEAR (C) SET (3 PCS.)	3	
13	312-704	WASHER (A)	1	
14	312-697	REAR CASE	1	
15	315-817	SCREW SET D3X12 (6 PCS.)	4	
16	311-962	SHIFT ARM	1	
17	315-137	SLIDE RING GEAR	1	
18	315-805	PINION (C)	1	
19	315-816	PLANET GEAR (B) SET (3 PCS.)	3	
20	315-804	PINION (B)	1	
21	315-815	PLANET GEAR (A) SET (3 PCS.)	3	
22	315-136	FIRST RING GEAR	1	
23	312-716	WASHER (B)	1	
24	318-231	MOTOR SPACER	1	
25	318-244	MOTOR	1	
26	991-672	TAPPING SCREW (W/WASHER) D3X16	7	
27		NAME PLATE	1	
28	318-237	BIT HOLDER	1	
29	949-203	MACHINE SCREW M3X8 (10 PCS.)	2	
30	949-451	SPRING WASHER M3 (10 PCS.)	2	
* 31	318-243	HOUSING (A).(B) SET (MOSS GREEN)	1	
* 31	318-242	HOUSING (A).(B) SET (OFF-BLACK GREEN)	1	FOR Z SERIES
32	306-041	INTERNAL WIRE (B) (BLACK)	1	
33	306-040	INTERNAL WIRE (B) (RED)	1	
34	318-245	DC-SPEED CONTROL SWITCH	1	
35	318-235	PUSHING BUTTON	1	
36	318-234	SHIFT KNOB	1	
37		HITACHI LABEL	1	
38	306-952	STRAP (BLACK)	1	
39	315-141	TERMINAL SUPPORT (A)	1	
* 40	318-266	BATTERY FEB 9S (W/ENGLISH N.P)	1	
* 40	318-264	BATTERY FEB 9S (W/ENGLISH N.P)	1	FOR INA,NZL,HKG,SIN,SAF,KOR
* 40	318-265	BATTERY FEB 9S (W/ENGLISH N.P)	1	FOR USA,CAN

