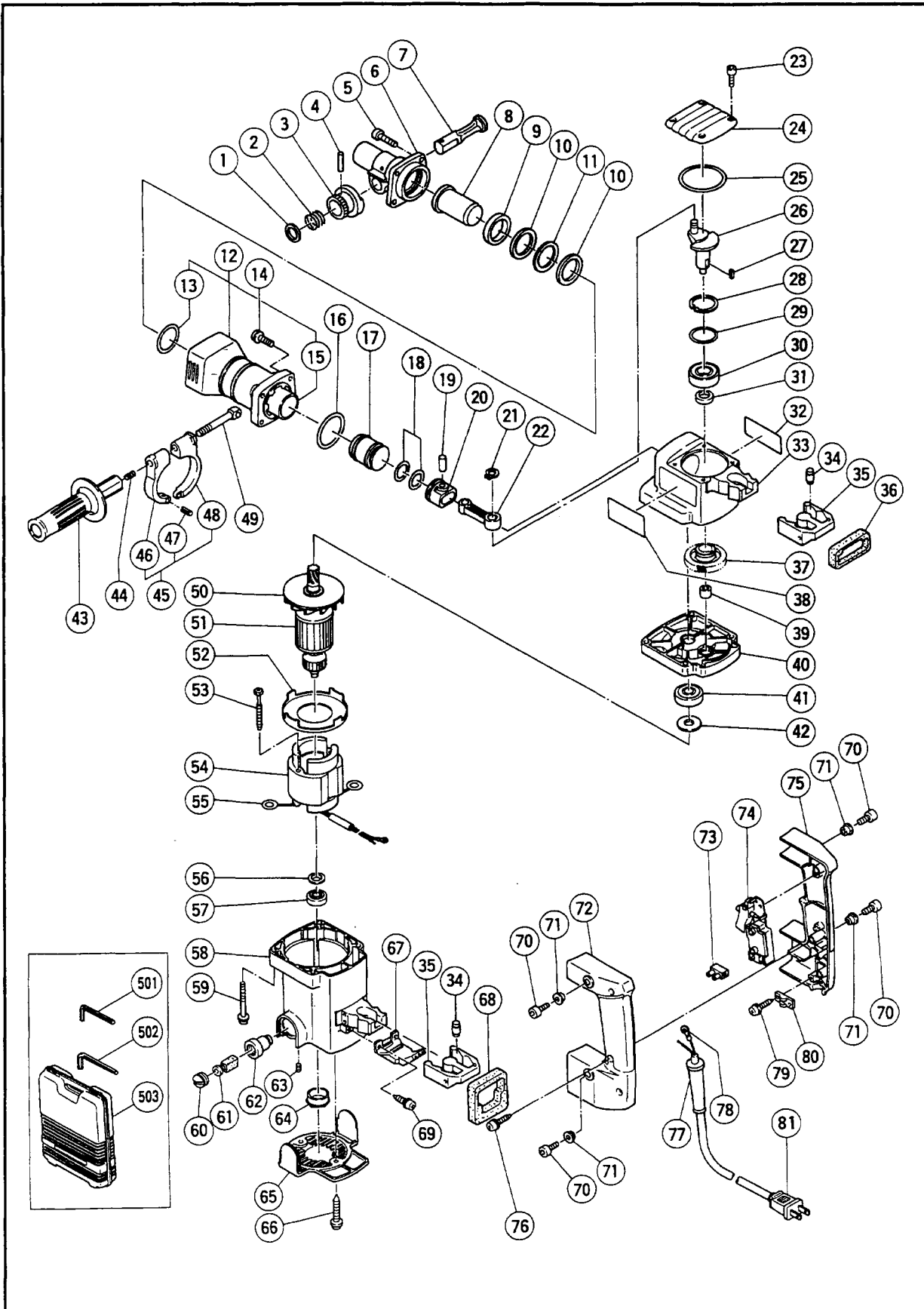


# Assembly Diagram for Model H45SB2



## PARTS

H 45SB2

ITEM NO.	CODE NO.	DESCRIPTION	NO. USED	REMARKS
1	983-277	STOP WASHER	1	
2	981-937	STOPPER SPRING	1	
3	983-241	KNOB (A)	1	
4	943-364	NEEDLE ROLLER D4X20	1	
5	993-040	NYLOCK HIGH TENSION BOLT M7X25	4	
6	987-711	FRONT COVER	1	
7	985-372	STOP LEVER	1	
8	987-705	SECOND HAMMER	1	
9	987-704	DAMPER WASHER	1	
10	987-702	DAMPER	2	
11	987-703	WASHER	1	
12	312-026	CYLINDER CASE ASS'Y	1	INCLUD.13,15
13	987-701	O - RING	1	
14	993-041	NYLOCK BOLT (W/FLANGE) M6X25	4	
15	312-285	CYLINDER	1	
16	980-715	O - RING (S - 48)	1	
17	312-027	STRIKER	1	
18	986-104	O - RING	2	
19	980-708	PISTON PIN	1	
20	310-113	PISTON	1	
21	939-540	RETAINING RING FOR D10 SHAFT (10 PCS.)	1	
22	310-114	CONNECTING ROD	1	
23	983-162	SEAL LOCK HEX. SOCKET HD. BOLT M4X12	4	
24	310-115	CRANK COVER	1	
25	980-744	O - RING (S - 55)	1	
26	310-116	CRANK SHAFT	1	
27	930-511	FEATHER KEY 4X4X10	1	
28	948-391	RETAINING RING FOR D40 HOLE	1	
29	996-363	O - RING (S - 40)	1	
30	620-3VV	BALL BEARING 6203VVCMP2S	1	
31	310-119	OIL SEAL	1	
32		NAME PLATE	1	
33	310-117	CRANK CASE	1	
34	310-124	HANDLE BUMPER	8	
35	310-123	TRANSITORY UNIT	2	
36	310-126	HANDLE PACKING (A)	1	
37	310-120	FIRST GEAR	1	
38		HITACHI LABEL	1	
39	939-299	NEEDLE BEARING (M661)	1	
40	310-129	GEAR COVER ASS'Y	1	INCLUD.78
41	620-1VV	BALL BEARING 6201VVCMP2S	1	
42	971-736	WASHER (B)	1	
43	981-870	SIDE HANDLE	1	
44	672-612	SPRING	1	
45	980-657	HANDLE HOLDER ASS'Y	1	INCLUD.46 - 48
46	980-659	HANDLE HOLDER (B)	1	
47	949-875	ROLL PIN D6X22 (10 PCS.)	1	
48	980-658	HANDLE HOLDER (A)	1	
49	971-785	HANDLE BOLT	1	
50	310-130	FAN	1	
51	360-360U	ARMATURE ASS'Y 110V - 115V	1	INCLUD.41,42,50,56,57

\*: ALTERNATIVE PARTS

**PARTS**

H 45SB2

ITEM NO.	CODE NO.	DESCRIPTION	NO. USED	REMARKS
52	980-931	FAN GUIDE	1	
53	953-121	HEX. HD. TAPPING SCREW D5X50	2	
54	340-326C	STATOR 115V	1	INCLUD.55
55	930-703	BRUSH TERMINAL	2	
56	982-631	WASHER (A)	1	
57	608-VVM	BALL BEARING 608VVMC2EPS2L	1	
58	310-146	HOUSING ASS'Y	1	INCLUD.62,63
59	980-951	HEX. SOCKET HD. BOLT (W/FLANGE) M5X45	4	
60	935-829	BRUSH CAP	2	
61	981-612Z	CARBON BRUSH (AUTO STOP TYPE) (1 PAIR)	2	
62	971-001	BRUSH HOLDER	2	
63	938-477	HEX. SOCKET SET SCREW M5X8	2	
64	310-111	BEARING BUSHING (B)	1	
65	310-118	TAIL COVER	1	
66	307-811	TAPPING SCREW (W/FLANGE) D4X16 (BLACK)	2	
67	980-754	INTERNAL WIRE HOLDER	1	
68	310-125	HANDLE PACKING (B)	1	
69	985-480	TAPPING SCREW (W/WASHER) D5X20	2	
70	991-690	SEAL LOCK HEX. SOCKET HD. BOLT M5X12	4	
71	991-711	DISTANCE PIECE (B)	4	
72	310-142	HANDLE (B)	1	
73	938-307	PILLAR TERMINAL	1	
74	992-891	SWITCH (A) (1P SCREW TYPE) W/O LOCK	1	
75	310-141	HANDLE (A)	1	
76	307-028	TAPPING SCREW (W/FLANGE) D4X25 (BLACK)	3	
77	938-051	CORD ARMOR D10.1	1	
78	930-804	TERMINAL M4.0 (10 PCS.)	1	
79	984-750	TAPPING SCREW (W/FLANGE) D4X16	2	
80	960-266	CORD CLIP	1	
81	500-241Z	CORD	1	

\*: ALTERNATIVE PARTS

